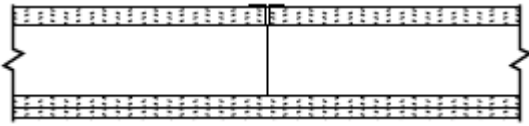


Shaftwall / Area Separation Walls

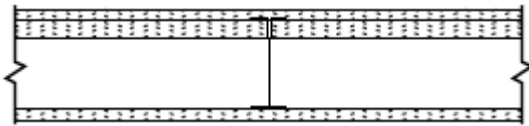


2 hr.

DESIGN #:

- **V455**

C-H, C-T or I-Stud shaftwall framing members approved (2", 4" or 6"). Single layer 1" Shaft Liner nestled into shaftwall framing. On opposite side of assembly first layer of 5/8" Type X wallboard attached horizontal with second layer applied vertical. Fire tested both sides.

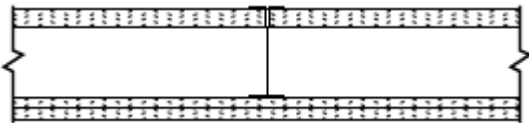


2 hr.

DESIGN #:

- **V455**

C-H, C-T or I-Stud shaftwall framing members approved (2", 4" or 6"). Single layer 1" Shaft Liner nestled into shaftwall framing. One layer 5/8" Type X wallboard attached vertical on each side of assembly. Fire tested both sides.

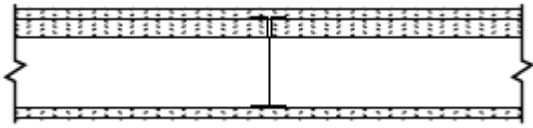


2 hr.

DESIGN #:

- **U428**
- **WP7051**

C-H, C-T or I-Stud shaftwall framing members approved (2", 4" or 6"). Single layer 1" Shaft nested into shaftwall framing. On opposite side of assembly two layers of 1/2" or 5/8" Type C wallboard applied. Fire tested both sides.

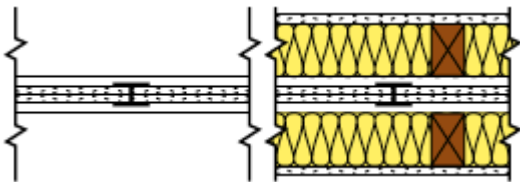


2 hr.

DESIGN #:

- **V455**

C-H, C-T or I-Stud shaftwall framing members approved (2", 4" or 6"). Single layer 1" Shaft Liner nestled into shaftwall framing. One layer 1/2" or 5/8" Type C wallboard attached vertical on each side of assembly. Fire tested both sides.



2 hr.

DESIGN #:

- **U375**
- **ASW1004**

Two layers 1" Shaft Liner inserted between 2" H-Stud metal framing. A 3/4" minimum air space must be maintained between steel components and adjacent framing. Fire tested both sides.